



## Home of Google's Next Data Center

## Technically-Skilled Workforce

- More than 12,000 technically-skilled workers are in the Jackson County region.

## Cost of Doing Business

- Alabama ranked 6th nationally for lowest cost of doing business, according to CNBC's 2013 Top States for Doing Business.
- The Alabama Data Processing Center Economic Incentive Act of 2012 encourages large data center projects to locate in the state.
- TVA offers competitive electric rates for data centers and has achieved 99.999 % reliability every year since 2000.

## Northeast College Site

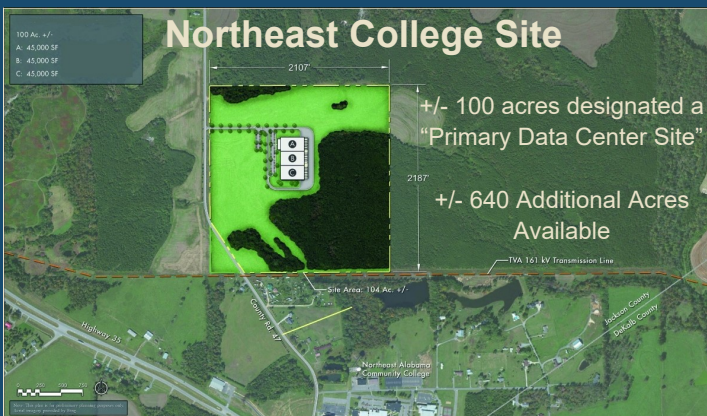
TVA-designated Primary Data Center Site and a designated "Alabama AdvantageSite"



Large-scale site assessment study conducted by TVA to identify prime locations within the Tennessee Valley suitable for data centers and technology companies.

Robust power capabilities and telecommunications connectivity are required, including long-haul fiber-optic networks from multiple carriers.

100-acre site located adjacent to Northeast Alabama Community College in FTC's Gig-Country.



## Jackson County

## Economic Development Authority

817 South Broad St., Scottsboro, AL 35768  
 jceda@scottsboro.org - jacksoncountyeda.org

Shelia Shepard: Interim President/CEO  
 Marilyn Lott: Marketing Director

## Quality of Place

- Goose Pond Colony is located on the banks of the Tennessee River's Lake Guntersville, which is nestled into the Cumberland Mountains. It features two 18-hole championship golf courses, lakeside cottages, waterfront campgrounds, a full service marina, meeting facilities, restaurants, shopping, a swimming pool, a beach area, and an amphitheater.
- The Tennessee River flows through Jackson County and provides more than 960 miles of shoreline and a 69,000-acre lake with mountainous scenery to enjoy boating, fishing, swimming and skiing.
- Crime rate is 25% of the national average
- Cost of living is 13.5% lower than US average
- A variety of housing is available, ranging from apartments to impressive waterfront estates.